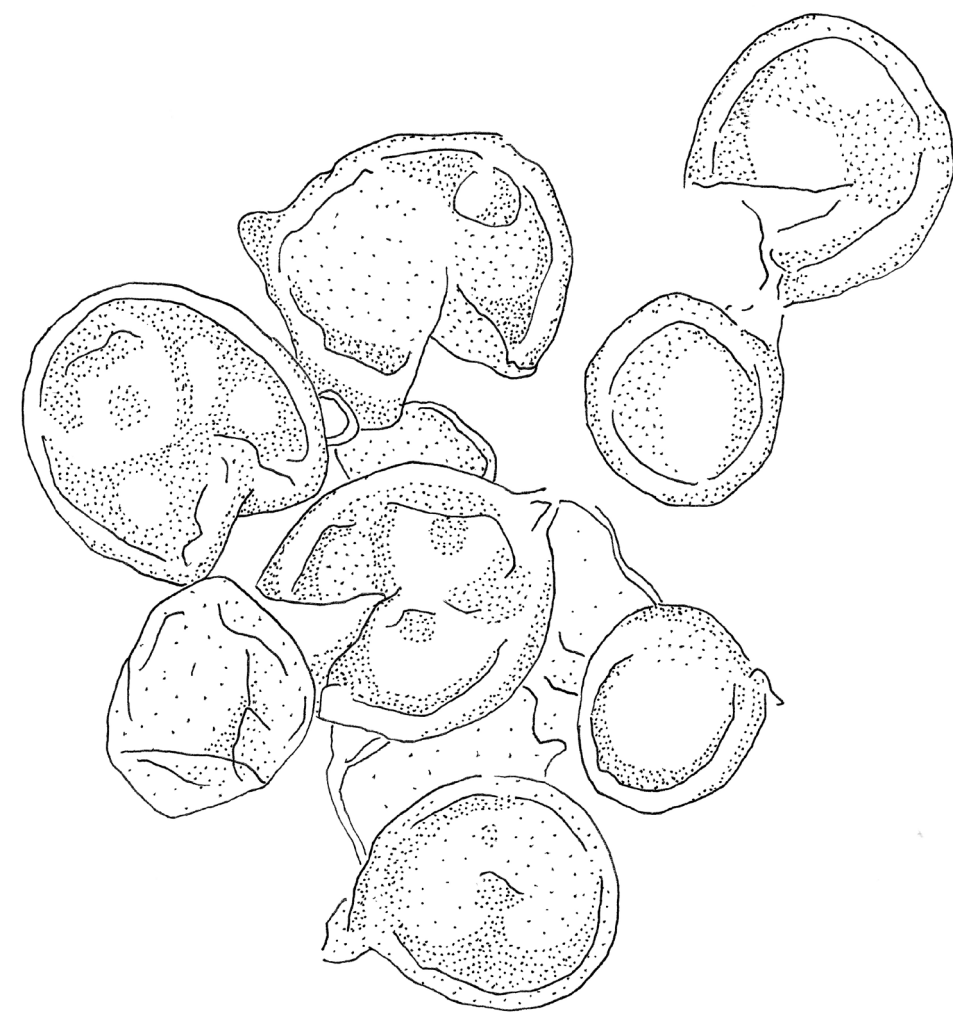


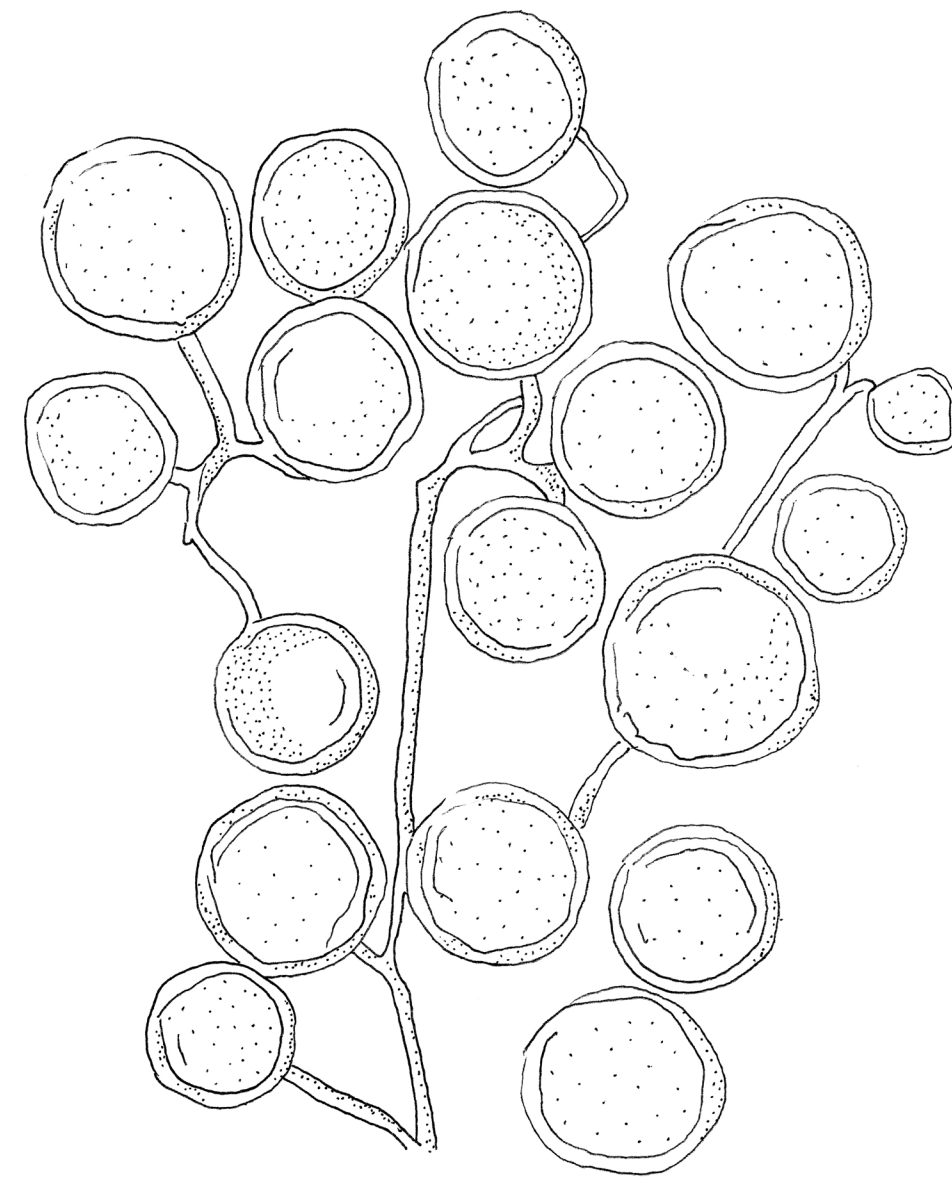


Rhizophagus irregularis + Chanvre
Glomus intraradices
Féтуque
Avoine

As Cd Cu

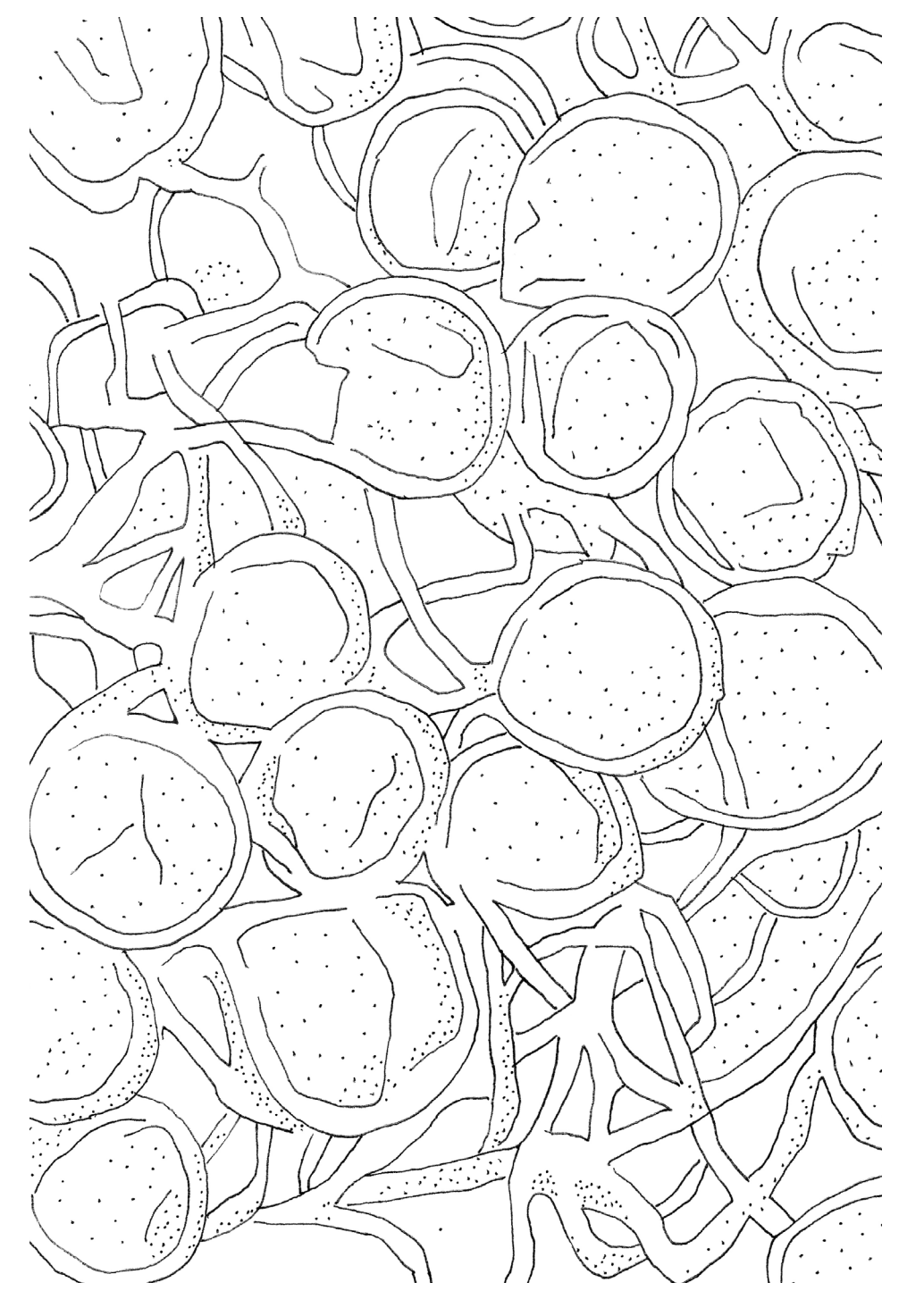


Rhizoglofus fasciculatum + Tournesol
Glomus fasciculatum
Avoine
Maïs



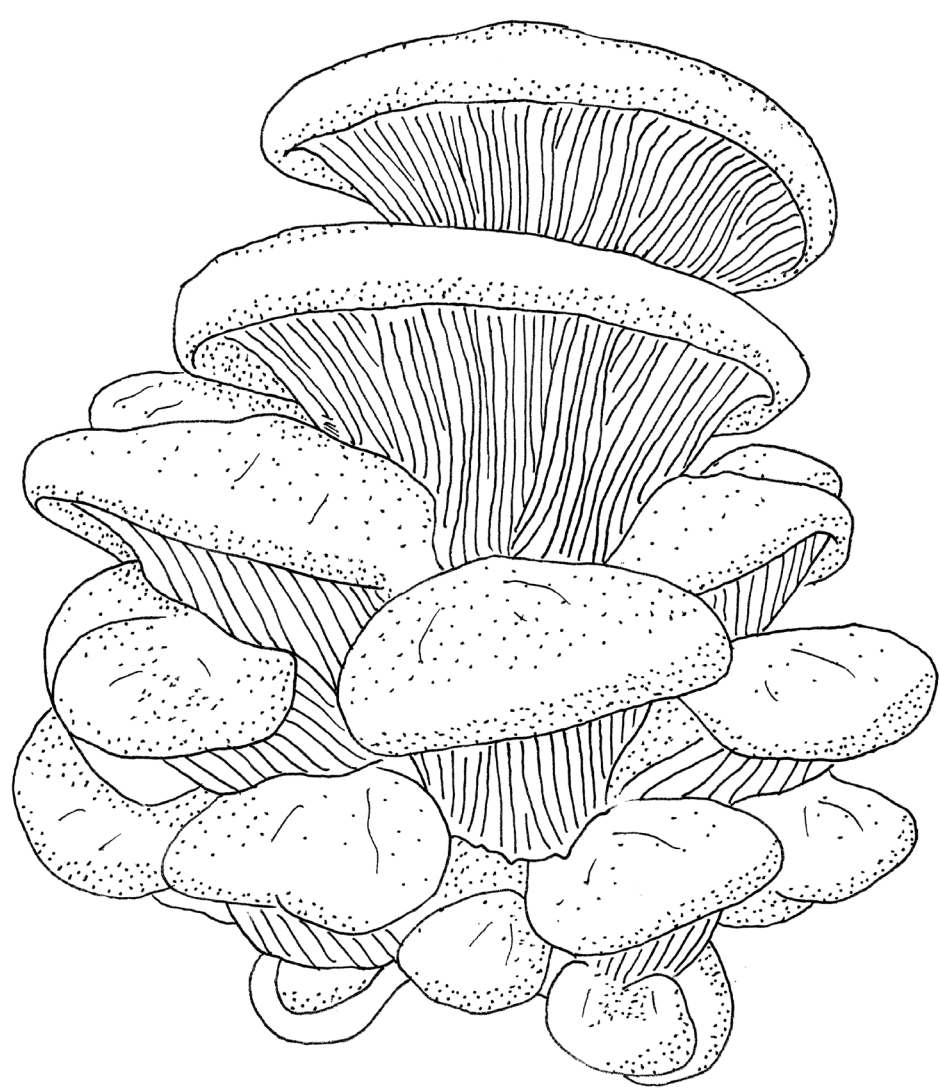
Oehlia diaphana + Peuplier
Glomus diaphanum
Féтуque

Cd Cu Pb Zn



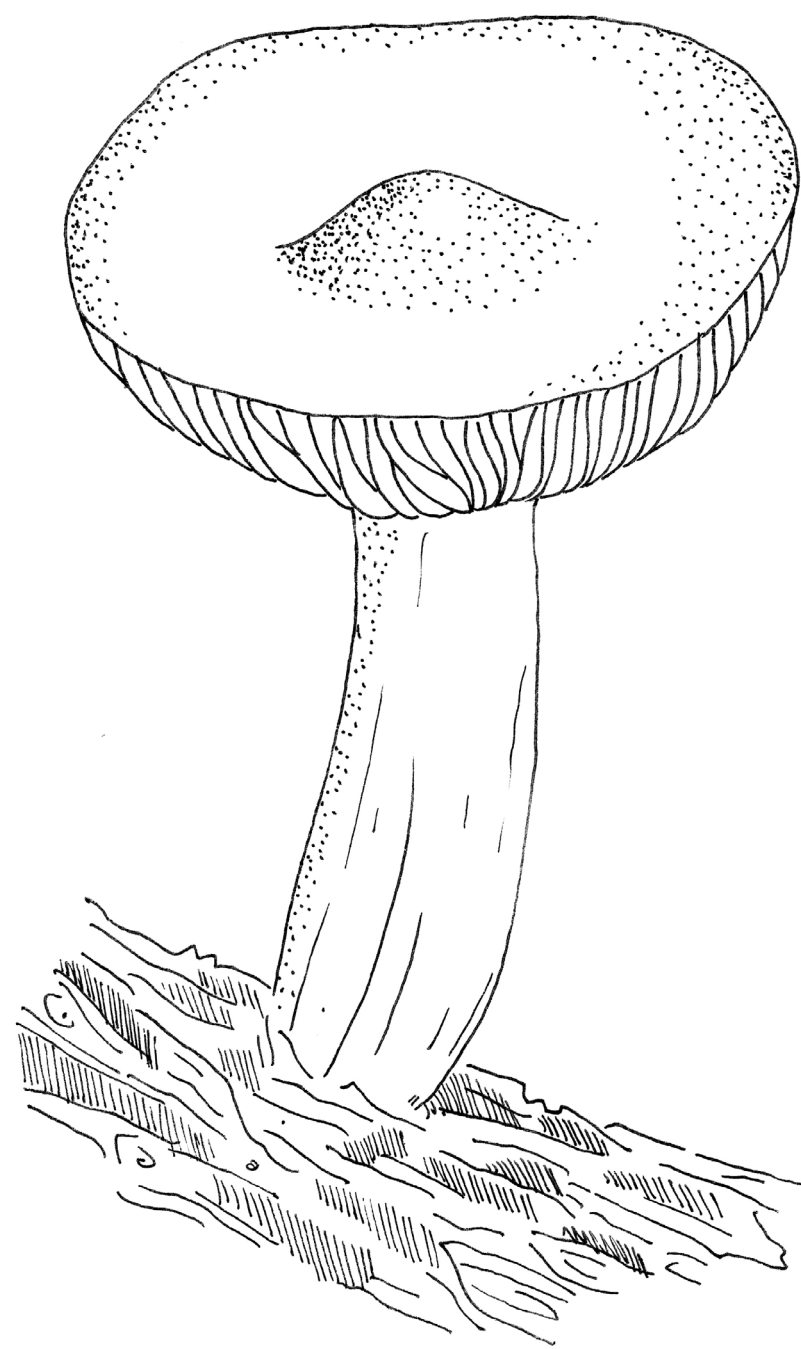
Rhizophagus aggregatus + Tournesol
Glomus aggregatum

Cr Zn



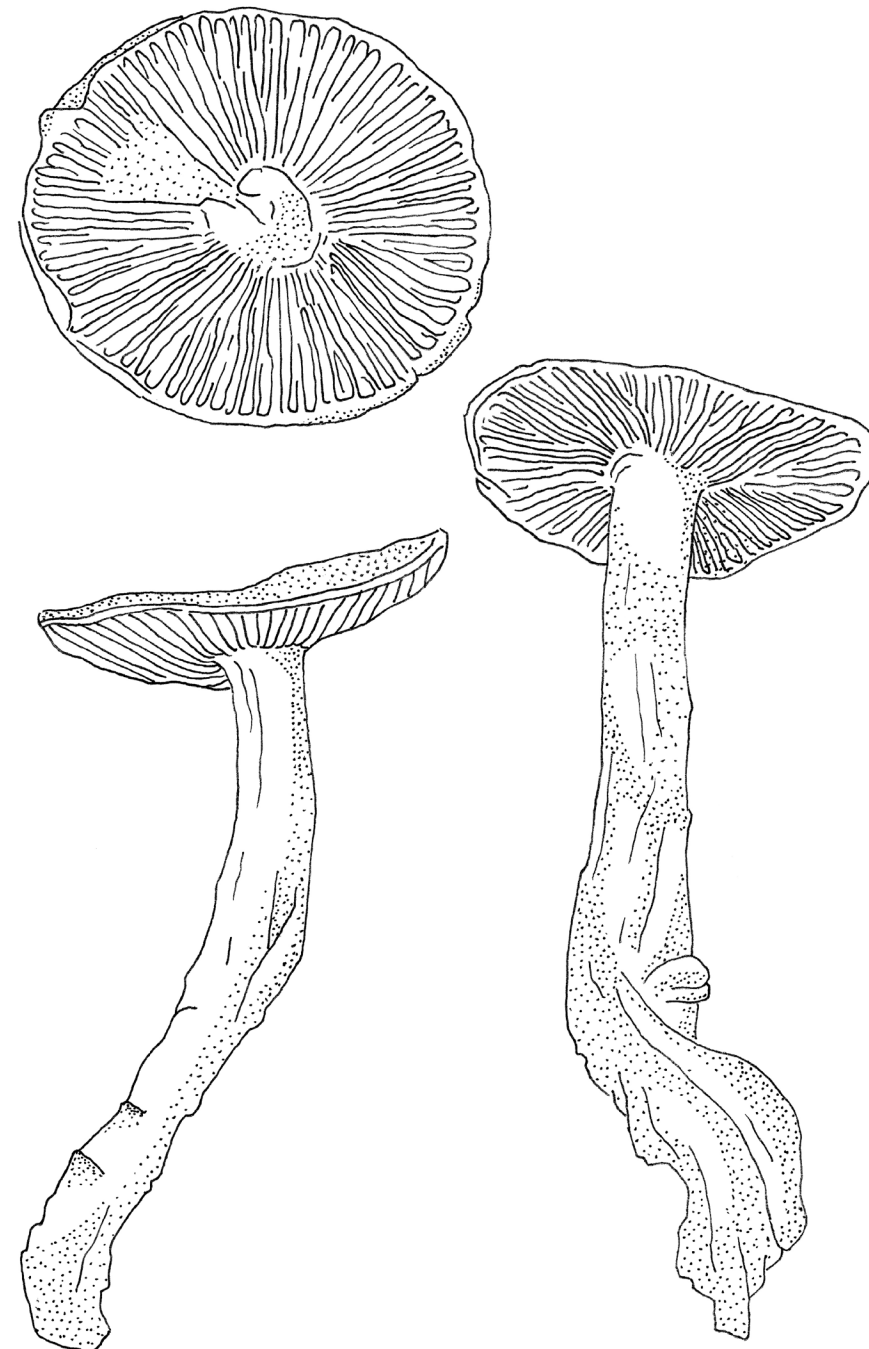
Pleurote en huître + Peuplier
Pleurotus ostreatus
Érable
Saule

Hg Pu



Pleurote de l'orme + Peuplier
Hypsizygus ulmarius
Érable

Hg Pu



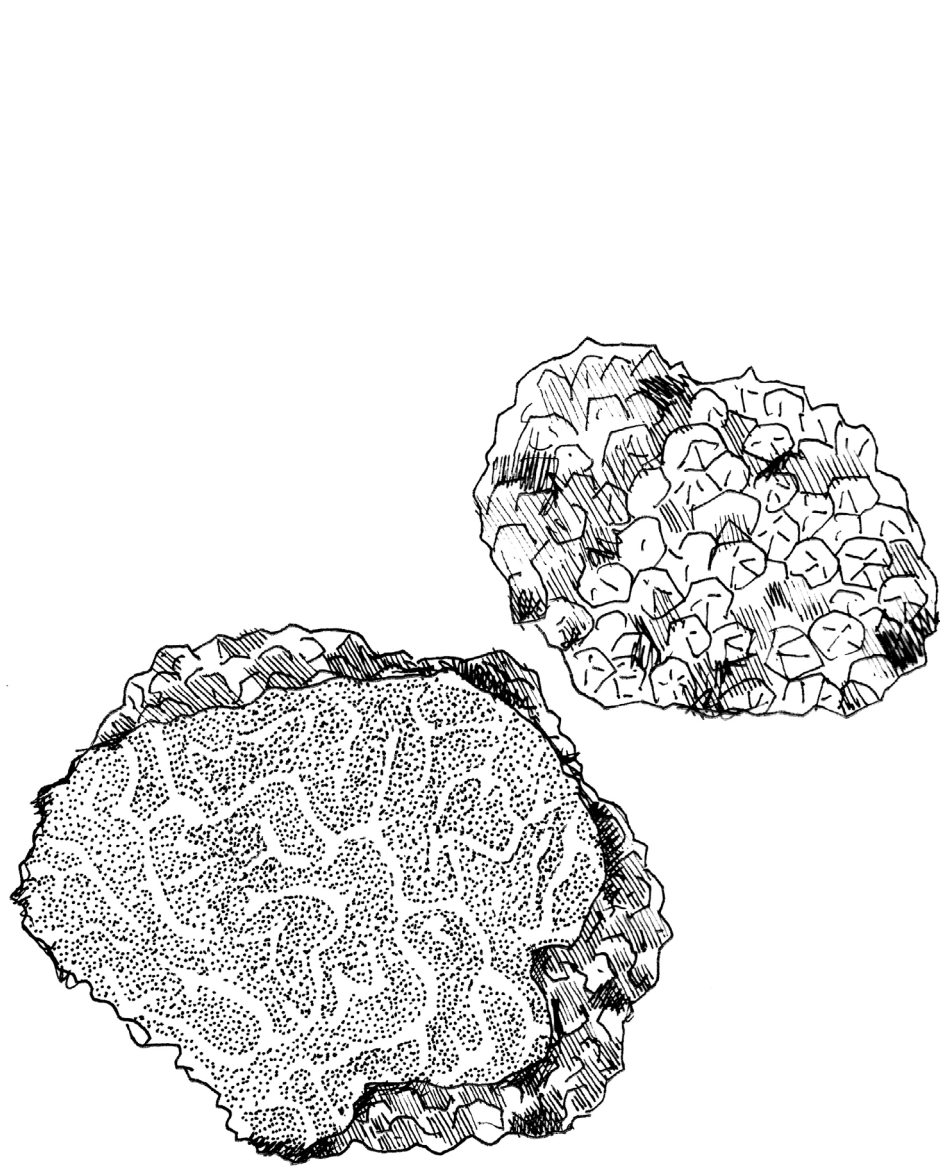
Hébelome à centre sombre + Peuplier
Hebeloma mesophaeum
Saule

Cd

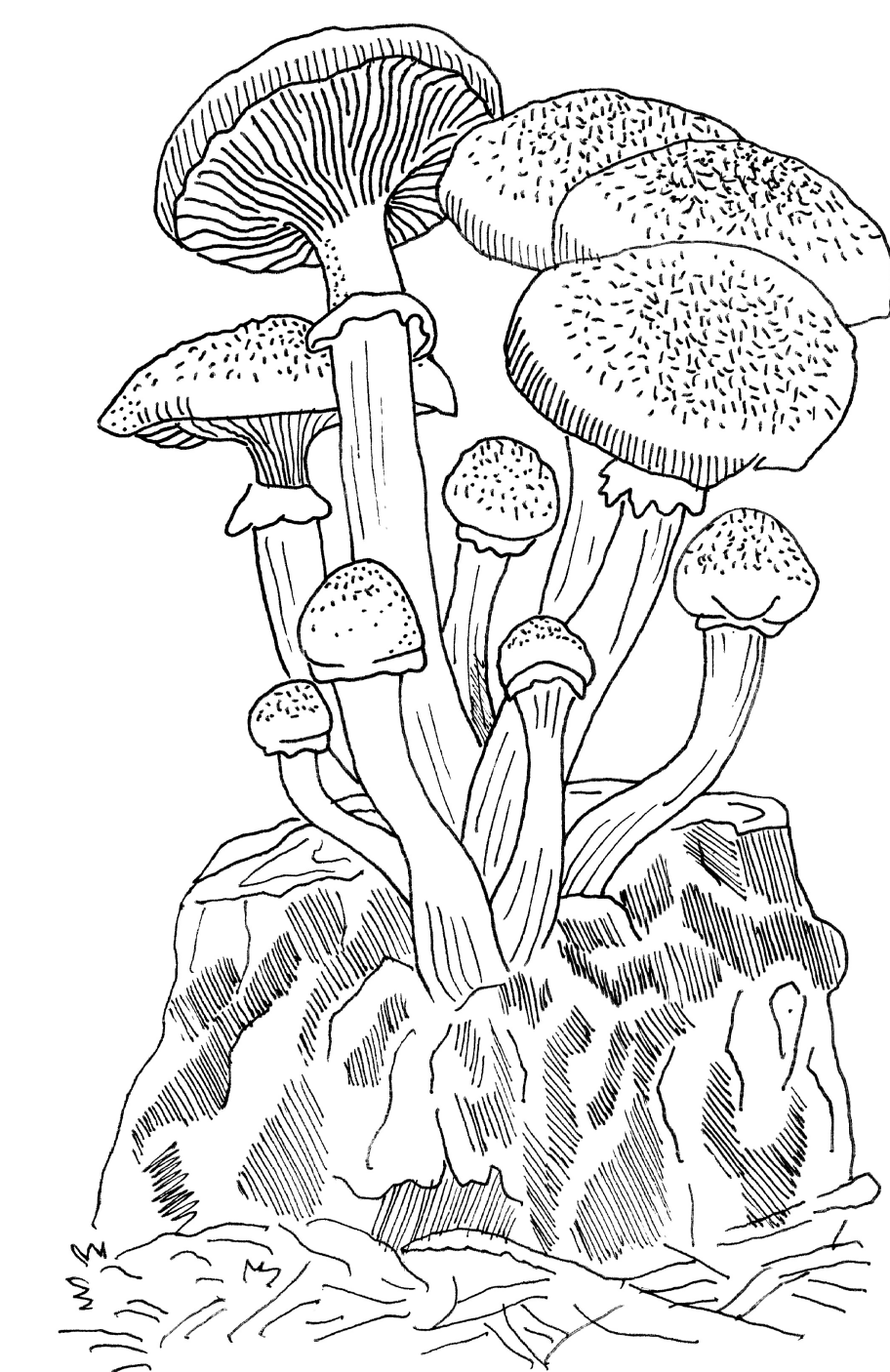


Paxille enroulé + Saule
Paxillus involutus

Cu Zn



Truffe des Appalaches + Peuplier
Tuber canaliculatum



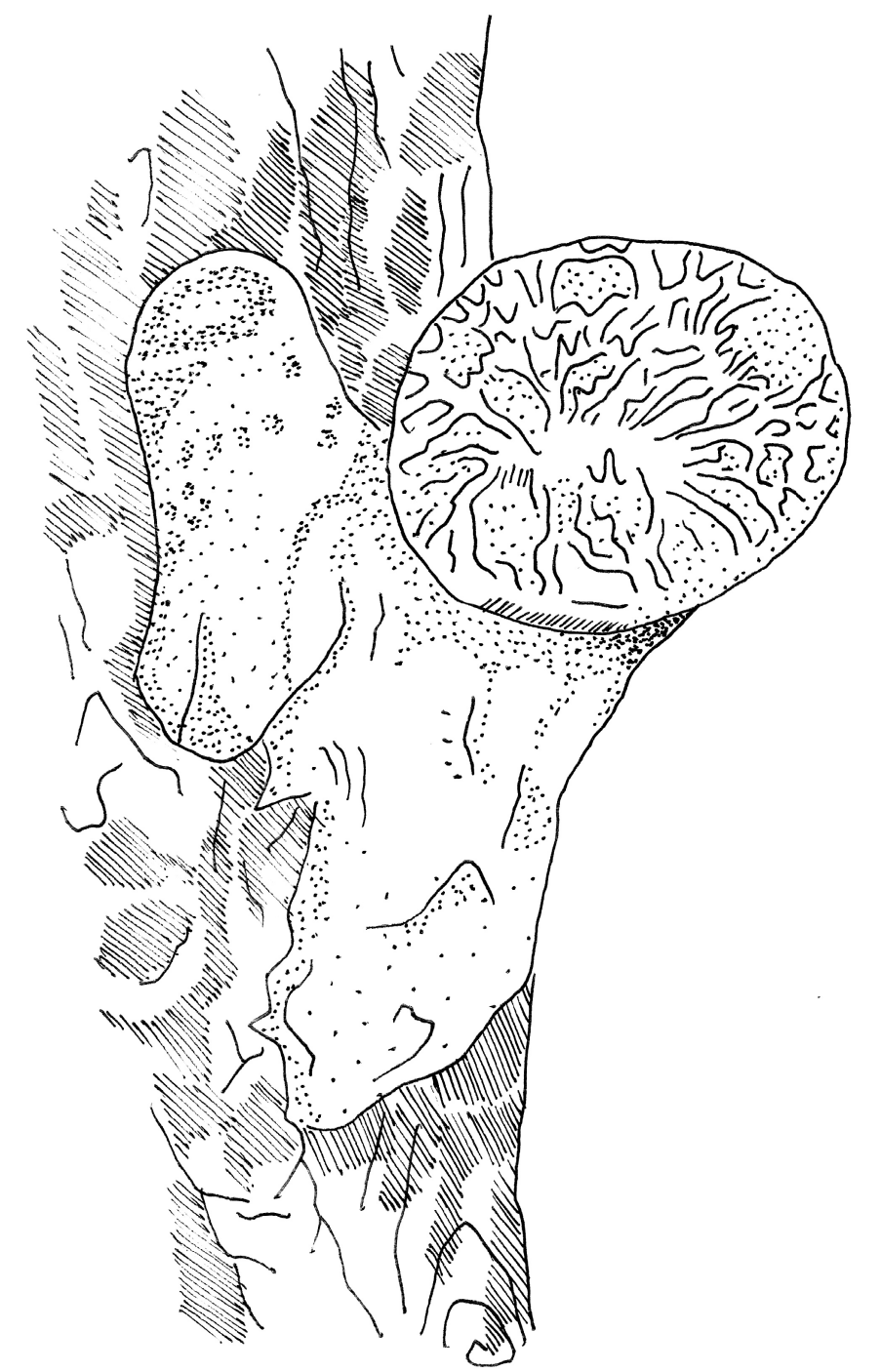
Armillaire couleur de miel + Érable
Armillaria mellea

Cd Cu Hg Pb



Amanite tue-mouches + Peuplier
Amanita muscaria

Cd Cu Hg



Popypore écaillé + Peuplier
Polyporus squamosus
Érable
Saule

Cd Cu Hg