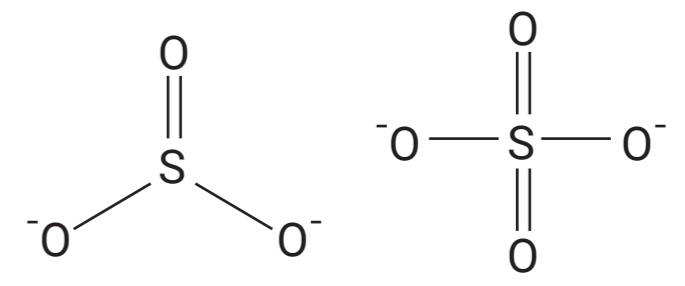


Lignine



Sulfites, sulfates, et autres ions



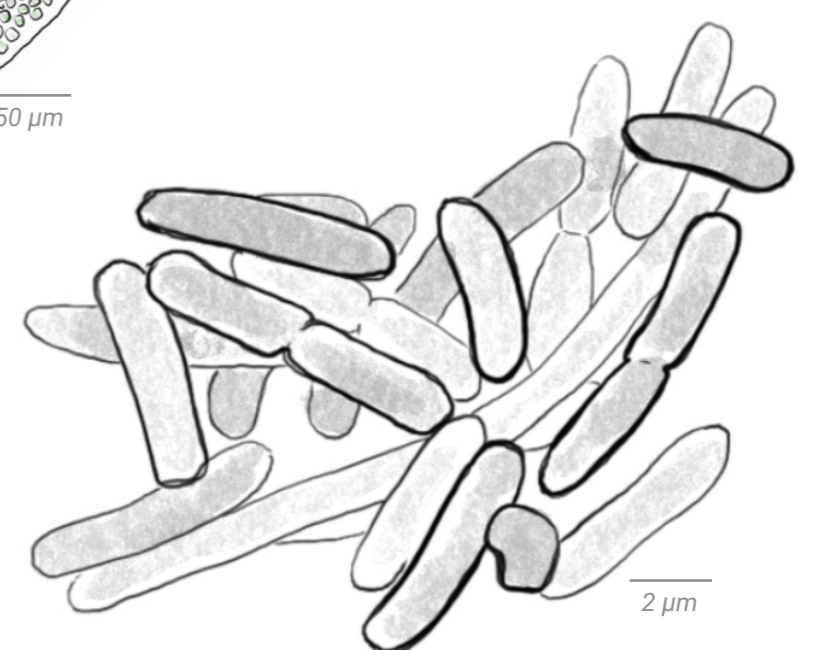
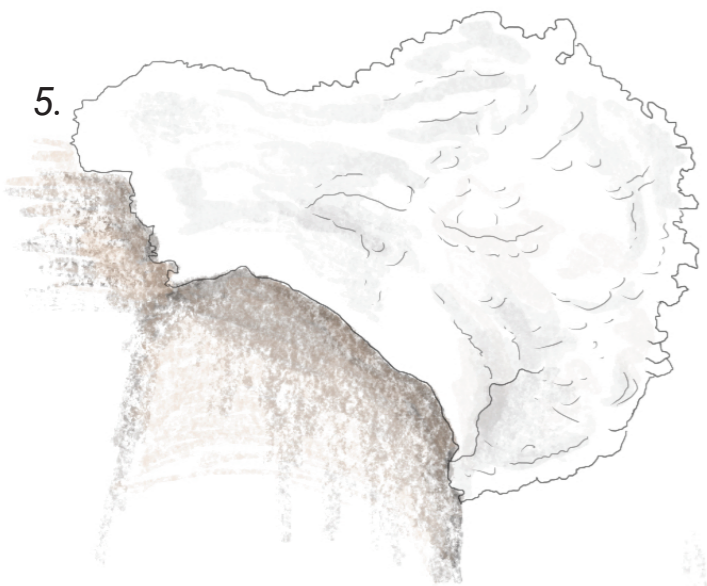
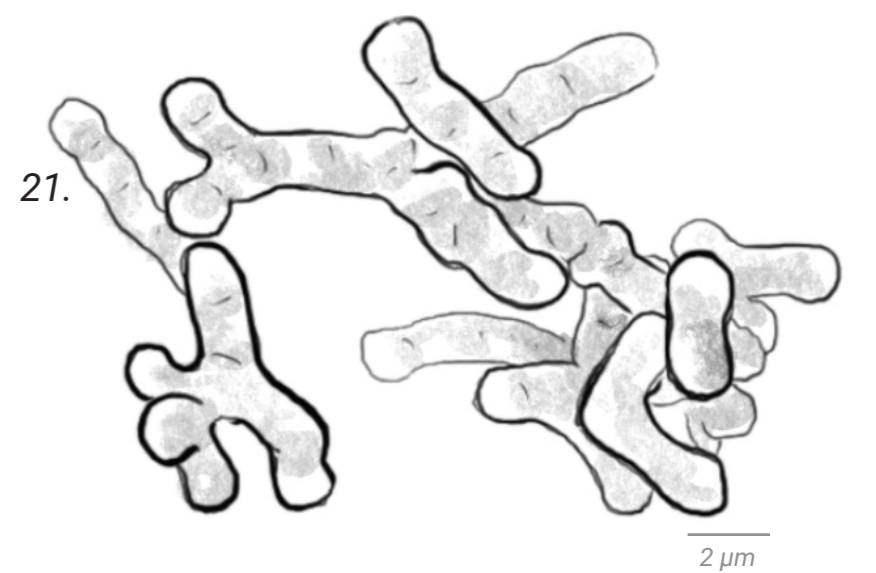
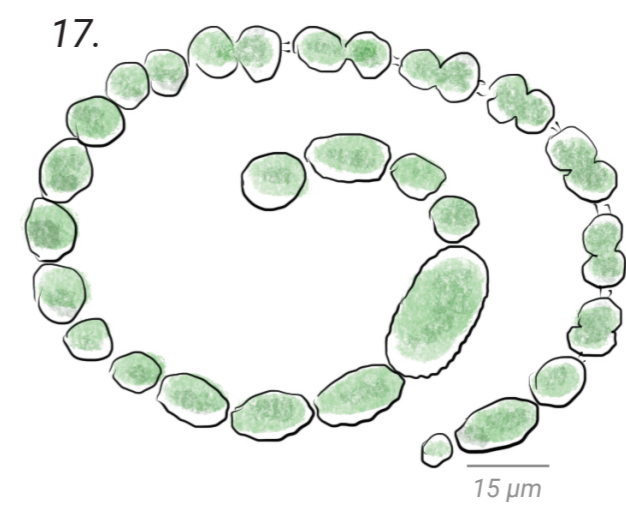
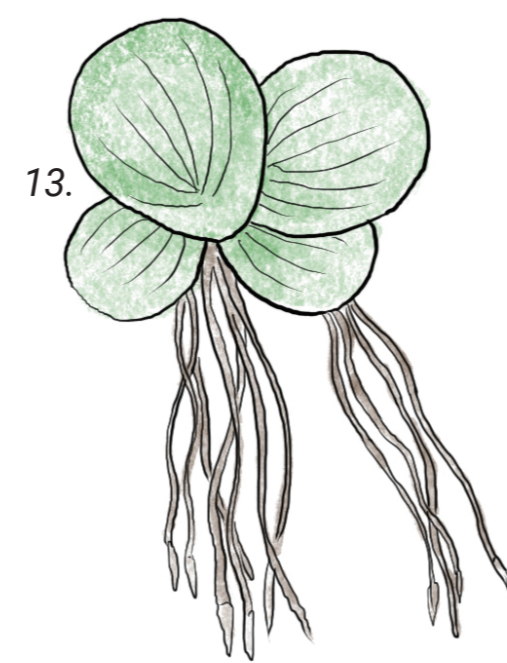
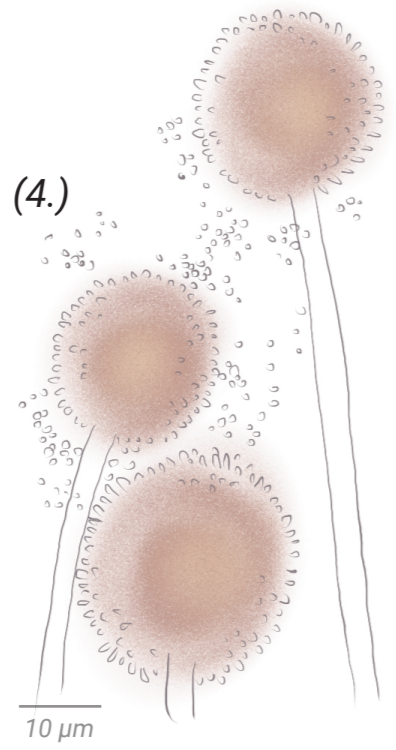
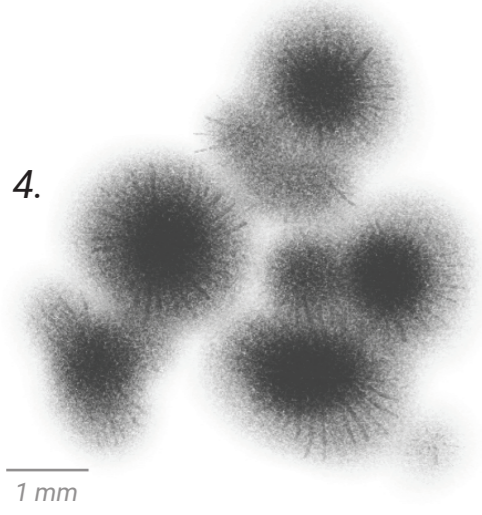
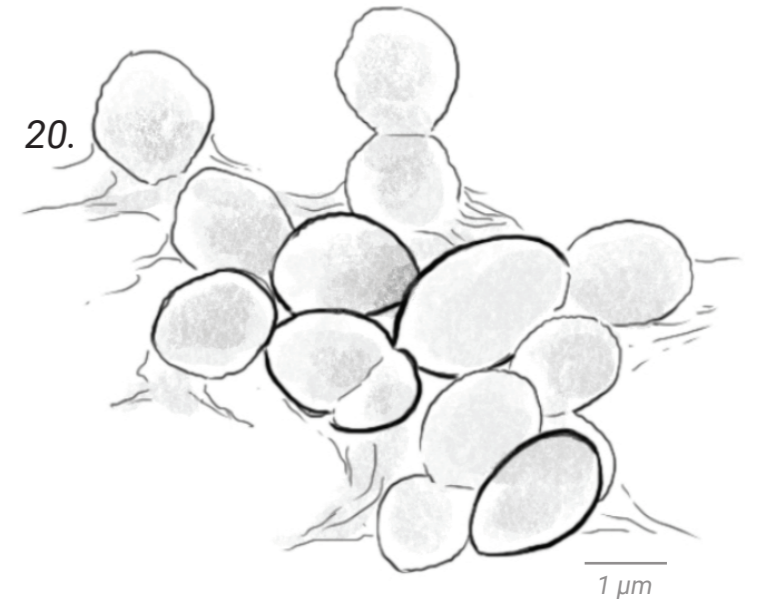
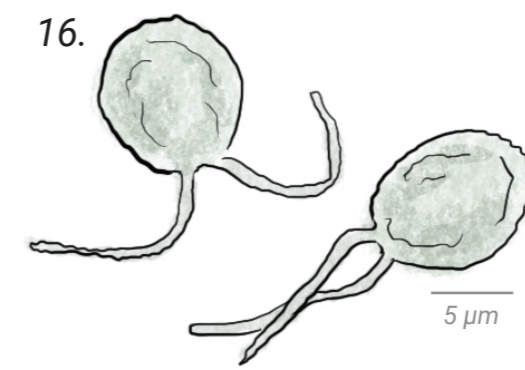
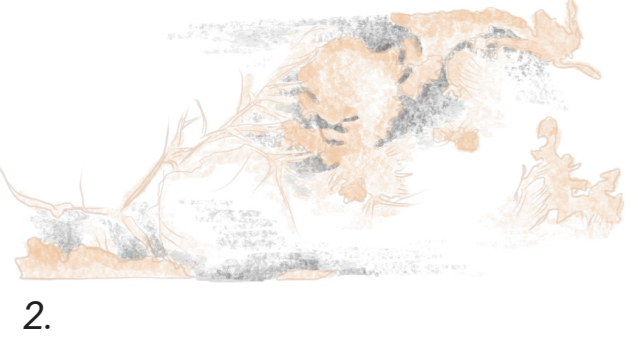
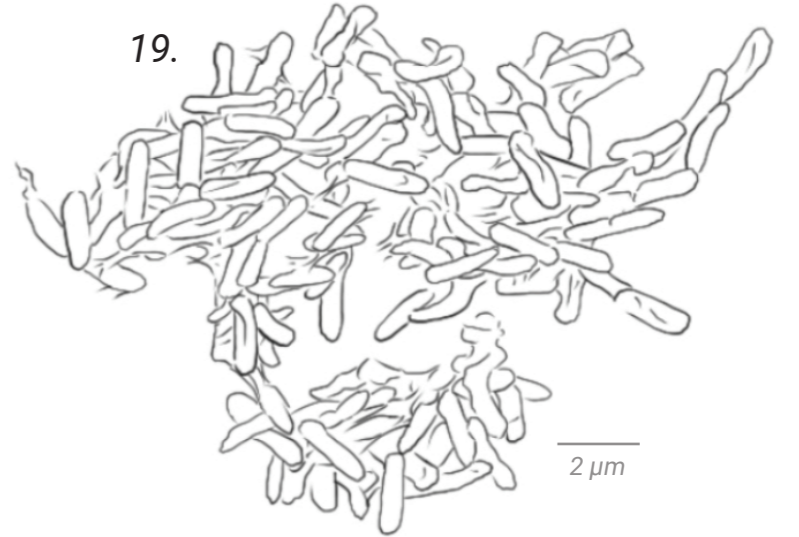
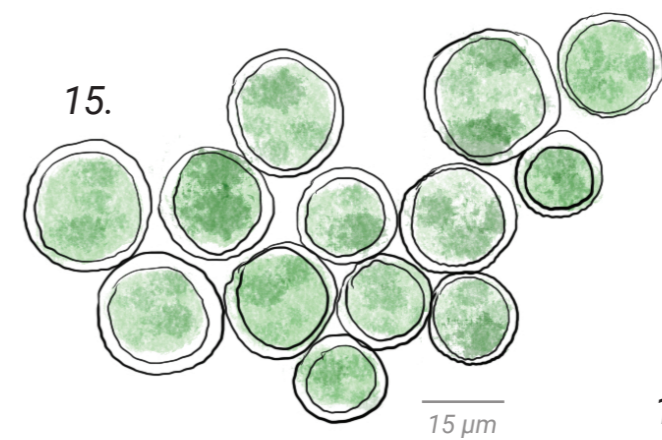
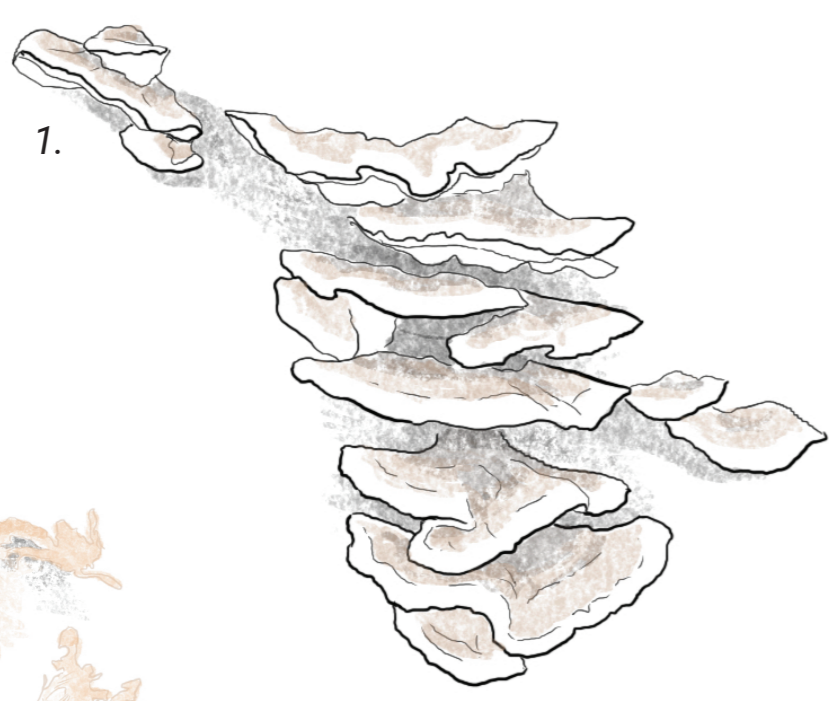
Matière organique

33 As Arsenic 74.922	24 Cr Chrome 51.996	48 Cd Cadmium 112.414
56 Ba Barium 137.327	80 Hg Mercure 200.592	82 Pb Plomb 207.200

Métaux lourds

7 N Azote 14.007	15 P Phosphore 30.974	6 C Carbone 12.011
----------------------------------	---------------------------------------	------------------------------------

Nutriments non-organiques



6 Rejets liquides de l'industrie Rémédiation et filtration biologique des eaux usées